



Medical Assistant

CERTIFICATE PROGRAM

880-HOUR DAY, AFTERNOON OR EVENING PROGRAM	\$20,636.00
Books	613.00
Uniforms	159.00
Student Fee	880.00
Technology Fee	150.00
Tools	873.00
Total	\$23,311.00

*Based on current education expenses and subject to change

EFFECTIVE FOR ALL ENROLLMENTS ON OR AFTER JUNE 17, 2024

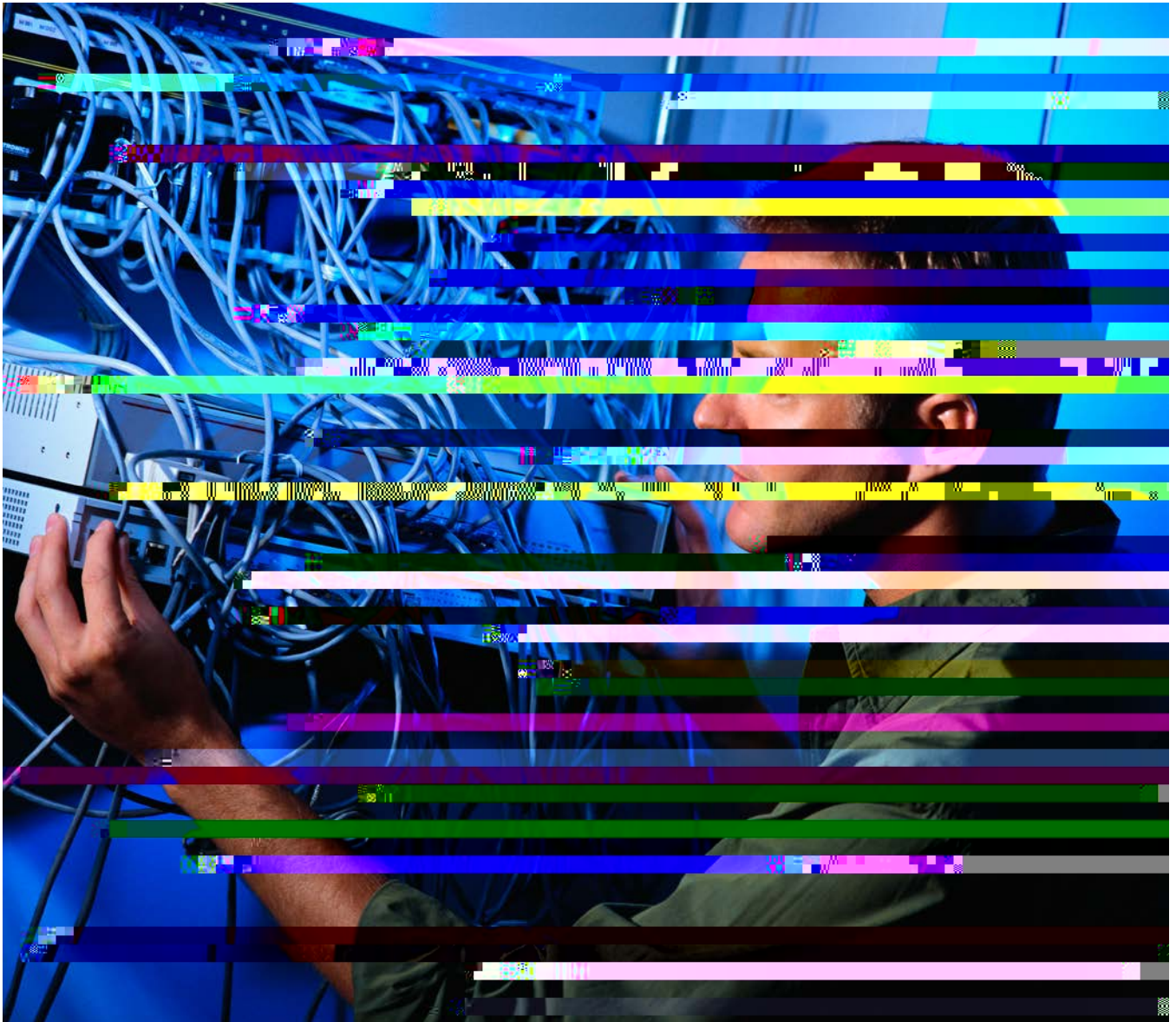


MOORESTOWN CAMPUS

856.722.9333

www.lincolntech.edu

LOANS AND GRANTS AVAILABLE TO THOSE WHO QUALIFY



Practical Nursing

CERTIFICATE PROGRAM

1500-HOUR DAY OR EVENING PROGRAM

M



MOORESTOWN CAMPUS

R. M. NJ

856.722.9333

www.lincolntech.edu

LOANS AND GRANTS AVAILABLE TO THOSE WHO QUALIFY

22 3988 R0524

Patient Care Technician

CERTIFICATE PROGRAM

600-HOUR DAY, AFTERNOON OR EVENING PROGRAM

M Moorestown Campus

ESTIMATED EDUCATIONAL EXPENSES*

Tuition	\$14,240.00
Books	366.00
Uniforms	159.00
Student Fee	775.00
Technology Fee	150.00
Tools	856.00
Total	\$16,546.00



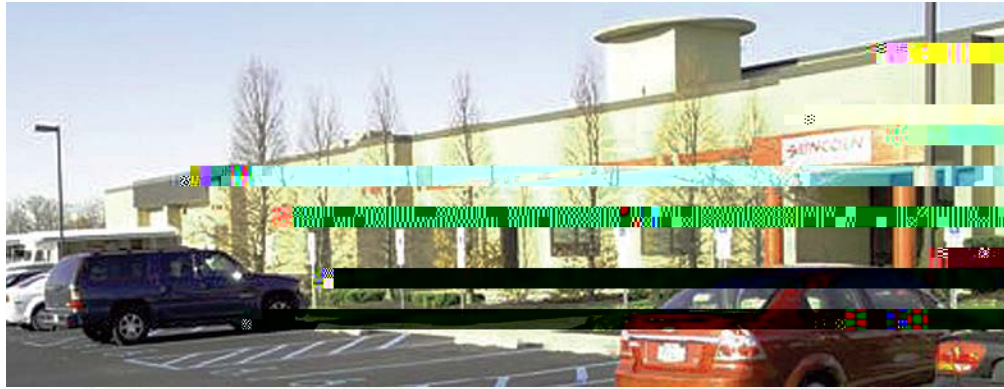
MOORESTOWN CAMPUS

R M NJ

856.722.9333

www.lincolntech.edu

LOANS AND GRANTS AVAILABLE TO THOSE WHO QUALIFY



Air Conditioning, Refrigeration and Heating Systems Technology

CERTIFICATE PROGRAM

1200-HOUR DAY, AFTERNOON OR EVENING PROGRAM

M Moorestown Campus

ESTIMATED EDUCATIONAL EXPENSES*

Tuition	\$29,370.00
Books	320.00
Uniforms	65.00
Registration Fee	150.00
Student Fee	800.00
Technology Fee	150.00
Tools	1,582.00
Total	\$32,437.00

*Based on current education expenses and subject to change.

EFFECTIVE FOR ALL ENROLLMENTS ON OR AFTER AUGUST 6, 2024



MOORESTOWN CAMPUS

R M NJ

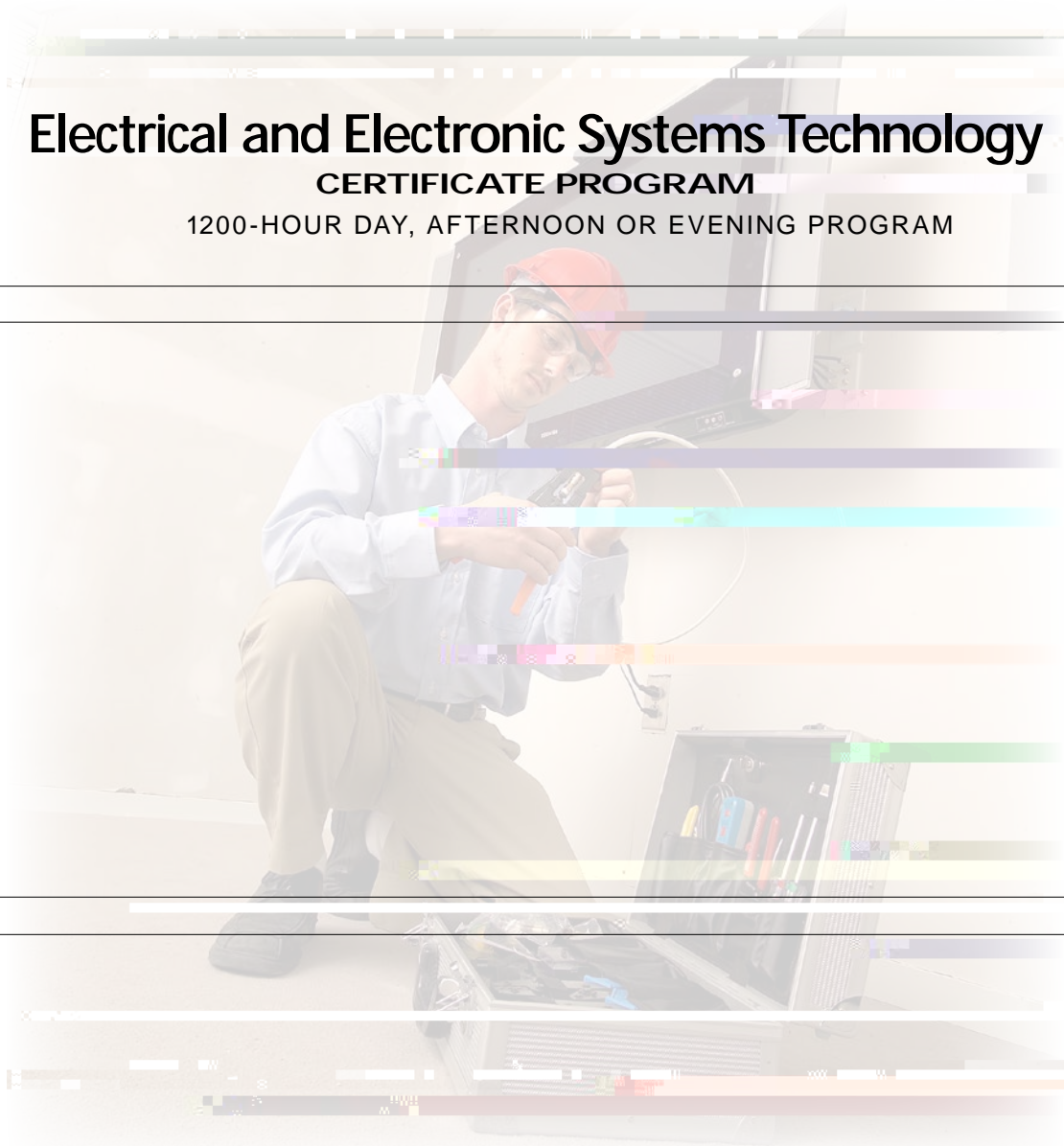
856.722.9333

www.lincolntech.edu

Electrical and Electronic Systems Technology

CERTIFICATE PROGRAM

1200-HOUR DAY, AFTERNOON OR EVENING PROGRAM



MOORESTOWN CAMPUS

R. M. NJ

856.722.9333

www.lincolntech.edu

22 3988 0824